

# Certificate

## Certified Passive House component

for cool, temperate climate, valid until 31.12.2021

Category: **Facade anchor**  
 Manufacturer: **BSP Bracket System Polska sp. z o. o.**  
**04-388 Warszawa, POLAND**  
 Product name: **KW4 PAS**

The following criteria were used in awarding this certificate:

### Efficiency Criterion

In a typical application\*, the construction fulfills the requirements of

$$\text{Eff. fa} \leq 0.200 \text{ W/(kNK)}$$

### Comfort Criterion

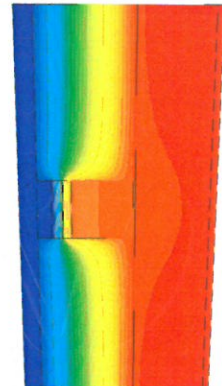
The inner surface must be warm enough to prevent mould as well as uncomfortable down-drafts and radiation losses.

$$\theta_{i,\text{min}} \geq 17^\circ\text{C}$$

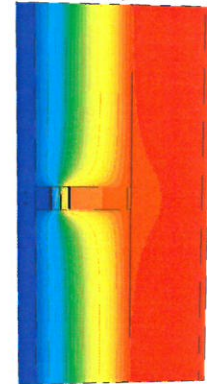
### Thermal data of the certified component

KW4 PAS	thermal bridge coefficient	minimum inner surface temperature
	$\chi$ [W/K]	$\theta_{i,\text{min}}$ [°C]
Fixed point 150	0.0104	19.33
Sliding point	0.0052	19.39

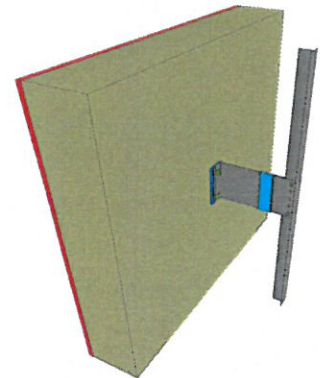
\* The criterion has been validated with a representative facade of a school building



Isothermal map of the fixed point



Isothermal map of the sliding point



Representation of the fixed point

cool, temperate climate



**CERTIFIED COMPONENT**

Passive House Institute

# Data sheet

BSP Bracket System Polska sp. z o. o., KW4 PAS

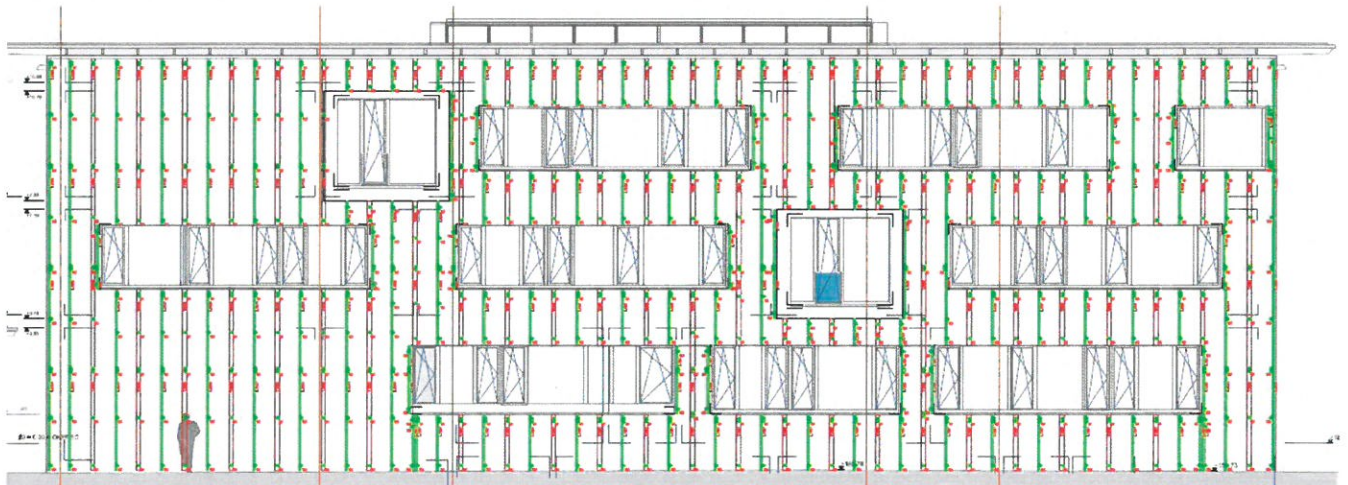
**Manufacturer** BSP Bracket System Polska sp. z o. o.  
 Prochowa 35 lok. 31  
 Warszawa, Poland  
 www.bspsystem.com

Criteria validated based on reference facade	<b><math>\Delta U</math> [W/m<sup>2</sup>K]</b>
<b>LC III</b>	<b>0.0131</b>

In order to validate the suitability, the manufacturer provides a statical calculation and an associated installation plan for the reference facade.

The classification criteria and the load class allocation can be found in the current criteria "Zertifizierte Passivhaus Komponente – Fassadenanker, Version 2.0, 08.05.2017".

Load class (LC) / Facade weight		Thermal bridge coefficients [W/K]			
-	[kN/m <sup>2</sup> ]	X <sub>FP</sub>	-	X <sub>SP</sub>	-
III	0.21	0.0104		0.0052	
Efficiency	$\Delta U$	Quantity / m <sup>2</sup>			
[W/(kNK)]	[W/m <sup>2</sup> K]	FP1	FP2	SP1	SP2
0.0626	0.0131	0.74		1.02	



Installation-plan reference facade of the certified component

Load-class (LC)	Facade cladding	Facade weight [kN/m <sup>2</sup> ]	Efficiency criterion fulfilled?
I	Aluminium laminated	0.100	yes
II	Plastic	0.150	yes
III	Fibre-cement plates	0.200	yes
IV	Acrylic glass	0.250	not evaluated
V	Concrete	0.300	not evaluated
VI	Ceramics	> 0.300	not evaluated