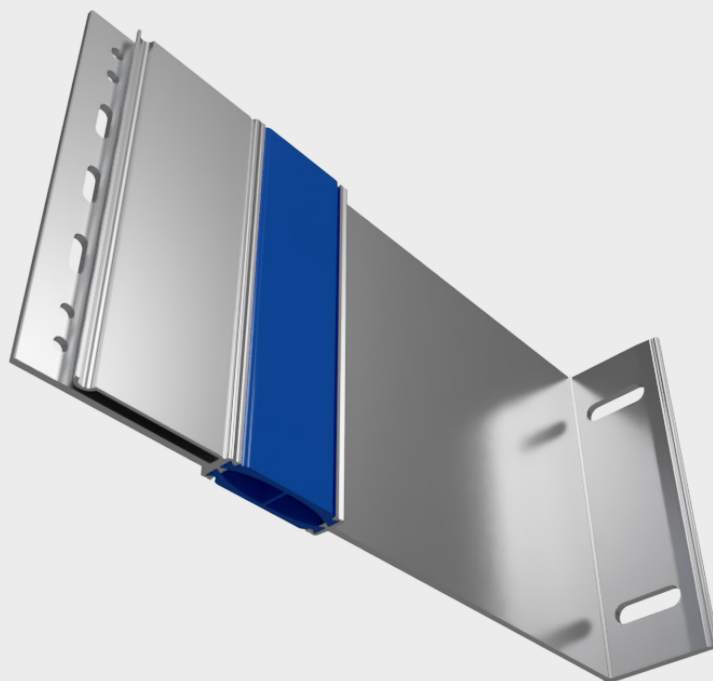




BracketSystem®
Polska

Passive substructure system **BSP KW4 PAS**



The **BSP KW4 PAS** system is the latest passive system for the substructure introduced by BSP.

The principle of its operation is very similar to the **BSP KW1 PAS** system. Consoles with a plastic spacer are also used in this case, but the console structure, manner of joining its individual elements, and materials used for its production have been improved and

optimised. The main purpose of developing this system was to obtain a cheaper product while maintaining good performance. As a result, we managed to create a cheaper product with even better thermal insulation and static parameters. The product has already passed a number of corrosion, strength, and fire tests thereby confirming its use on external facades.

For more detailed information, please contact us by phone or email and visit us at www.bspsystem.com

**PATENT
APPLICATION
NR. P.425083**

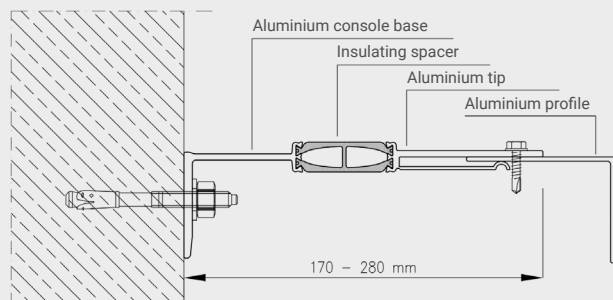


www.bspsystem.com

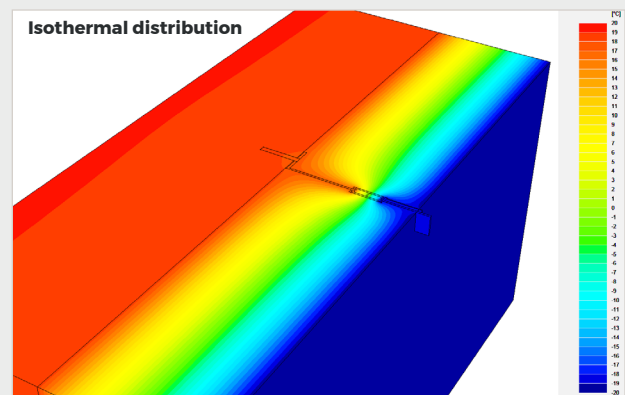
A profile of the point coefficients of heat transfer - so-called thermal bridges - for BSP KW4 PAS passive consoles

Console reach	Console height	Thickness of the thermal insulation wool	Heat conductivity coefficient for thermal wool	Substrate thickness	Type of substrate	Heat conduction coefficient for the substrate	Point heat transfer coefficient
[mm]	[mm]	[mm]	[W/(mK)]	[mm]	[-]	[W/(mK)]	[W/K]
170	150	150	0,034	240	Reinforced concrete	2,5	0,0075
					Silikat	0,8	0,00675
					Porotherm	0,6	0,00625
					Aerated concrete	0,3	0,005
	60				Reinforced concrete	2,5	0,00325
					Silikat	0,8	0,003
					Porotherm	0,6	0,00275
					Aerated concrete	0,3	0,00225
200	150	180	0,034	240	Reinforced concrete	2,5	0,00825
					Silikat	0,8	0,00750
					Porotherm	0,6	0,00724
					Aerated concrete	0,3	0,006
	60				Reinforced concrete	2,5	0,00375
					Silikat	0,8	0,0035
					Porotherm	0,6	0,00325
					Aerated concrete	0,3	0,00275
220	150	200	0,034	240	Reinforced concrete	2,5	0,009
					Silikat	0,8	0,00825
					Porotherm	0,6	0,00775
					Aerated concrete	0,3	0,00650
	60				Reinforced concrete	2,5	0,00425
					Silikat	0,8	0,004
					Porotherm	0,6	0,00375
					Aerated concrete	0,3	0,003

Console construction chart



Isothermal distribution



www.bspsystem.com

Modern solutions based on extensive knowledge and experience.